



مركز التخطيط والجودة للخدمات الطبية  
CENTER FOR HEALTHCARE PLANNING & QUALITY

***DUBAI HEALTHCARE  
PROVISION REPORT  
2009***

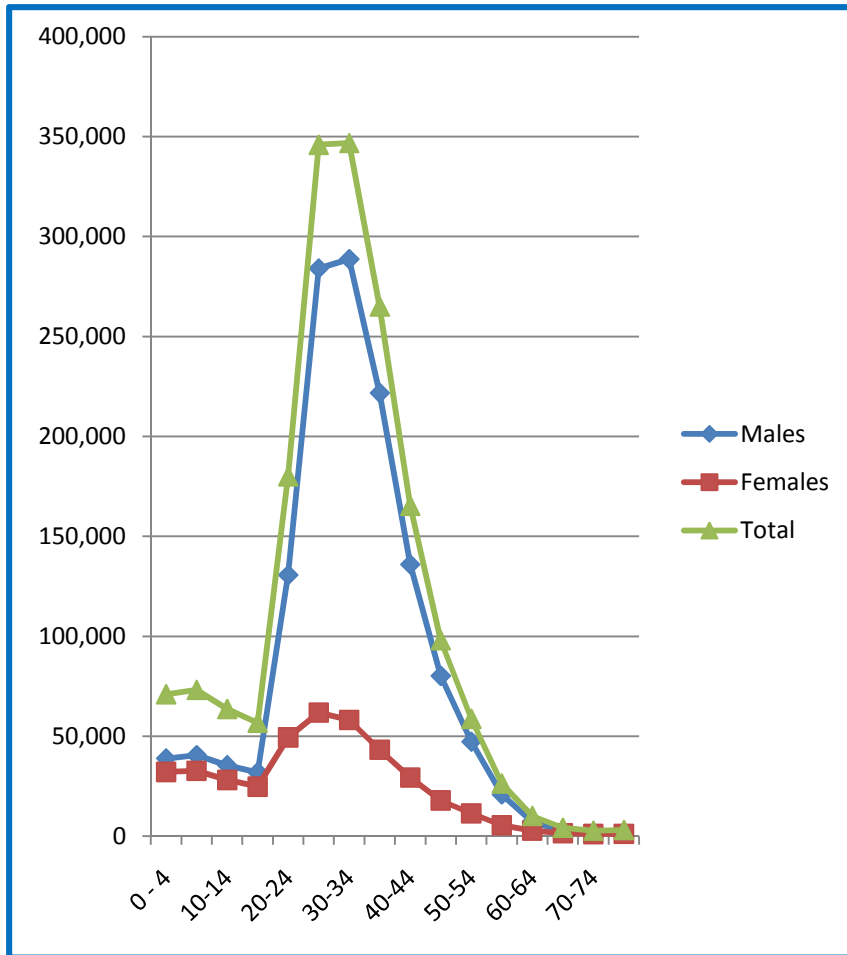
# Contents

Title	Page
Dubai population by Age and Gender -2009	4
Population Growth Scenarios 2008 - 2020	5
Cancer Registry 2000-2007	7
Cancer cases by Type, Nationality & Gender	8
Cancer Registry in DHA 2009	9
Dubai Hospitals Bed Distribution - 2009	11
List of Hospitals - Dubai 2009	12
Outpatient Healthcare Facilities and Specialized Centers	14
Major Equipment – 2009	15
Health Manpower – 2009	16
Basic Healthcare Services Utilization – 2009	18
International Benchmark	19
Expected Hospitals - Dubai Healthcare City	21

# ***Dubai Demographics & Basic Health Indicators***

# Dubai Population - 2009

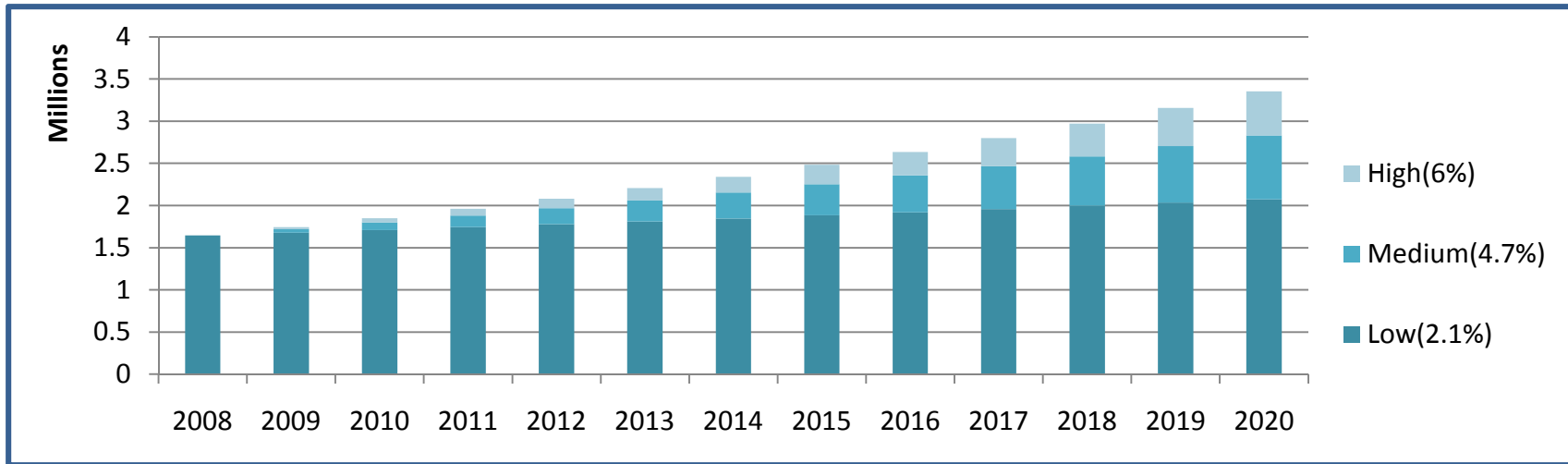
## Age & Gender



Sources: Dubai Statistics Center

Age	Males	Females	Total
0 - 4	38,864	32,161	71025
5 - 9	40,483	32,717	73200
10-14	35,450	28,166	63616
15-19	31,951	24,813	56764
20-24	130,638	49,424	180062
25-29	284,086	61,851	345937
30-34	288,692	58,139	346831
35-39	221,735	43,291	265026
40-44	135,932	29,369	165301
45-49	80,193	17,891	98084
50-54	47,270	11,417	58687
55-59	20,868	5,465	26333
60-64	7,339	2,826	10165
65-69	2,683	1,479	4162
70-74	1,639	1,102	2741
75+	1,916	1,128	3044

# Population Growth Scenarios 2008 - 2020



Year	Nationals			Non Nationals		
	Low %2.1	Med %4.7	High %6	Low %2.1	Med %4.7	High %6
2008	158,196	158,196	158,196	1,487,777	1,487,777	1,487,777
2009	163,269	164,087	164,910	1,517,697	1,559,978	1,582,548
2010	168,504	170,198	171,908	1,548,226	1,635,745	1,683,559
2011	173,908	176,536	179,204	1,579,378	1,715,258	1,791,229
2012	179,485	183,111	186,810	1,611,165	1,798,705	1,906,010
2013	185,241	189,930	194,738	1,643,600	1,886,282	2,028,380
2014	191,182	197,004	203,004	1,676,697	1,978,198	2,158,854
2015	197,313	204,341	211,620	1,710,469	2,074,669	2,297,979
2016	203,642	211,952	220,602	1,744,930	2,175,927	2,446,342
2017	210,173	219,847	229,966	1,780,095	2,282,211	2,604,569
2018	216,915	228,036	239,728	1,815,977	2,393,774	2,773,330
2019	223,872	236,530	249,904	1,852,592	2,510,882	2,953,340
2020	231,054	245,341	260,512	1,889,955	2,633,816	3,145,366

***Cancer Registry  
2000-2007***

## *Cancer Registry 2000-2007*

Registered Cancer Cases by Year and Gender			
Year	Total registered cases	Female	Male
2000	1130	565	565
2001	1150	574	576
2002	1124	672	552
2003	1200	684	616
2004	1235	614	621
2005	1247	638	609
2006	1298	655	644
2007	1202	579	623

Registered Cancer Cases by Geographical Distribution	
Area	No of registered cases
Abu Dhabi	3326
Dubai	1310
Al Ain	1623
Sharjah	1204
Ras Al Khaima	517
Ajman	366
Fujairah	324
Um Al Quain	96
UAE unknown	8
Western Region	16
Non residence	796

UAE Cancer registry data 2007, MOH

8/9/2010

## *Cancer cases by Type, Nationality & Gender*

Cancer Site	Nationals		Non Nationals		Total	% of Total
	Male	Female	Male	Female		
Trachea, Bronchus, Lung	147	43	291	75	<b>556</b>	5.79%
Non- Hodgkin Lymphoma	130	72	280	148	<b>630</b>	6.56%
Prostate	119	NA	196	NA	<b>315</b>	3.28%
Colon	88	73	205	98	<b>464</b>	4.83%
Stomach	98	44	150	58	<b>350</b>	3.64%
Bladder	83	28	140	28	<b>279</b>	2.90%
Myeloid Leukemia	44	52	179	76	<b>351</b>	3.65%
Lymphoid Leukemia	51	47	168	73	<b>339</b>	3.53%
Rectum	53	35	159	87	<b>334</b>	3.48%
Breast	4	422	15	1,296	<b>1,737</b>	18.08%
Thyroid	36	151	81	163	<b>431</b>	4.49%
Cervix Uteri	NA	98	NA	185	<b>283</b>	2.95%
Ovary	NA	71	NA	140	<b>211</b>	2.20%
Corpus Uteri	NA	44	NA	87	<b>131</b>	1.36%
Brain Nervous system	61	29	149	83	<b>322</b>	3.35%
Kidney	39	21	75	46	<b>181</b>	1.88%
Liver	46	31	88	21	<b>186</b>	1.94%
Skin	62	31	89	69	<b>251</b>	2.61%
Other unspecified	42	46	71	49	<b>208</b>	2.17%
others	374	246	1,012	415	<b>2,047</b>	21.31%
<b>TOTAL</b>	<b>1477</b>	<b>1584</b>	<b>3348</b>	<b>3197</b>	<b>9606</b>	100%

# Cancer Registry in DHA 2009

Sex	Locals	EX	GC
F	1186	1069	43
M	714	543	169

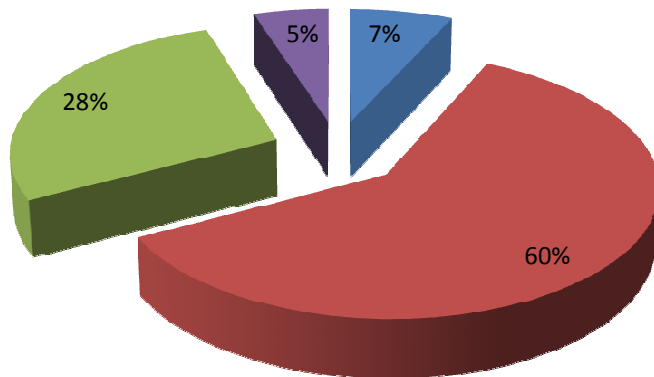
Description of Highest Numbers of Cases	Sex	Locals	EX	GC
Acute lymphoblastic leukemia	F	79	172	10
Acute lymphoblastic leukemia	M	138	98	4
Hodgkin's disease, unspecified	M	8	4	131
Malignant neoplasm of breast, unspecified	F	99	146	3
Malignant neoplasm of prostate	M	106	12	8
Malignant neoplasm of thyroid gland	F	211	129	3
Malignant neoplasm of upper-outer quadrant of breast	F	288	280	4

# ***Healthcare Statistics***

# Dubai Hospitals Bed Distribution - 2009

## Bed Distribution - 2009

■ MOH ■ DHA ■ PRIVATE ■ DHCC



Entity	Total Functioning beds	Percentage
MOH	227	7%
DHA	2,010	60.54%
PRIVATE	918	28%
DHCC	165	5%

**Hospitals in Dubai are mainly managed / regulated by four different entities listed below:**

1. Ministry of Health (MOH) Federal Government
2. Dubai Health Authority (DHA) Local Government
3. Dubai Healthcare City (DHCC) Free Zone
4. Private Hospitals in Dubai are regulated by DHA

2009 Statistics

Sources: DHA Data & MOH 2009 Annual statistics

8/9/2010

## *List of Hospitals - Dubai 2009*

Ministry of Health	Beds	Specialty
Al Baraha Hospital	147	General
Al Amal Hospital	80	Psychiatry

Dubai Health Authority	Beds	Specialty
Rashid Hospital & Trauma Center	655	General
Dubai Hospital	706	General
Al Wasel Hospital	559	Women Hospital

Dubai Healthcare City	Beds	Specialty
American Academy for Cosmetic Surgery	25	Cosmetic Surgery
The City Hospital	*165	General

\*City Hospital is approved for 210 beds however 140 are operational

• Sources: DHCC, DHA & MOH Data

8/9/2010

## *List of Hospitals - Dubai Private Sector 2009*

Private sector	Beds	Average Length of Stay	Occupancy Rate	Specialty
American Hospital	145	2.6	84.0	General
Al Raffa Hospital	15	1.0	61.3	Women
Belhoul European Hospital	12	1.5	60.4	General
Belhoul Specialist Hospital	72	2.6	43.3	General
Canadian Specialist Hospital	18	6.2	15.7	General
Emirates Hospital	27	1.3	38.2	General
Gulf Specialty Hospital	5	2.1	13.7	Plastic Surgery
International Modern Hospital	55	2.1	41.4	General
Iranian Hospital	171	2.3	68.6	General
Jebel Ali Hospital	20	2.0	31.5	General
Jebel Ali International Hospital	16	2.6	55.3	General
MED Care Hospital	65	2.2	52.7	General
Neuro Spinal Hospital	42	12.3	66.0	Neurosurgery
NMC Hospital	10	0.5	12.7	General
NMC Specialist Hospital	50	5.1	120.0	General
Welcare Hospital	120	2.7	86.3	General
Zuleikha Hospital	75	2.2	67.0	General

# Outpatients Healthcare Facilities & Specialized Centers

OUTPATIENT FACILITIES	MOH	DHA	PRIVATE	DHCC
PRIMARY HEALTHCARE	9	17	0	0
POLY CLINICS	0	0	310	29
SPECIALTY CLINICS	0	0	*455	27
DENTAL CLINICS	1	14	155	17
DAY SURGERY	0	0	0	9
SUPPORTIVE FACILITIES	MOH	*DHA	PRIVATE	DHCC
LABORATORY	1	1	39	6
OPTICAL SHOPS	0	0	226	2
DRUG STORES	1	0	65	0
PHARMACIES	11	4	459	6

\*Specialty Clinics (including G.P Clinics - since its categorized under single specialty for DHCC).

2009 DHA, Private Estimated Statistics

MOH & DHCC 2009 Data

8/9/2010

OTHER SPECIALIZED CENTERS	ENTITY
DUBAI CORD BLOOD AND RESEARCH CENTER	DHA
THALASSEMIA CENTER	DHA
DENTAL CENTER	DHA
TRAUMA CENTER - RASHID HOSPITAL	DHA
DUBAI GYNECOLOGY AND FERTILITY CENTER	DHA
BLOOD DONATION CENTER	DHA
DIABETES CENTER – JOSLIN	DHA
GENETICS CENTER	DHA
BLOOD BANK AT AL WASAL HOSPITAL	DHA
COMMUNITY CENTER FOR THE ELDERLY	DHA
DIABETES CENTER	MOH
BLOOD BANK AT AL BARAHA HOSPITAL	MOH
CryoSave Blood Bank	DHCC 14

## *Major Equipment - 2009*

Major Equipments	*MOH	DHA	PRIVATE	DHCC	TOTAL
MRI	1	1	9	3	<b>13</b>
CT	1	3	14	3	<b>20</b>
GAMA CAMERA	0	3	2	0	<b>5</b>
GAMA KNIFE	0	0	0	0	<b>0</b>
MAMMOGRAM	1	1	15	3	<b>19</b>
CATH LAB	0	2	5	1	<b>8</b>
LITHOTRIPSY	0	1	5	0	<b>6</b>
DIALYSIS UNITES	0	46	12	6	<b>64</b>
BONE DENSITY	1	1	8	3	<b>12</b>

\* No Data Collected

Sources: 2007 DHA Data & 2009 DHCC Data

8/9/2010

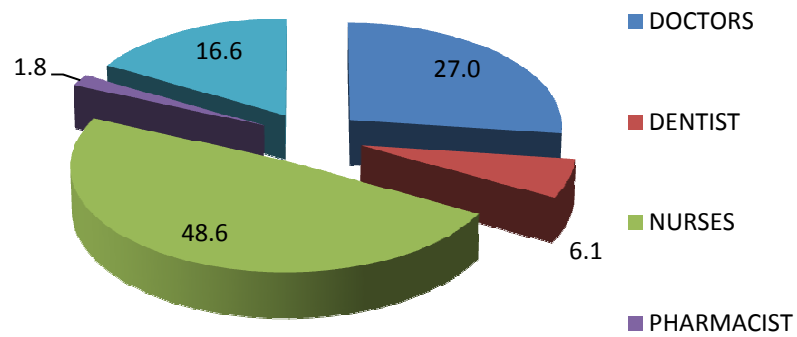
## Health Manpower – 2009

	MOH	DHA	PRIVATE	DHCC	Total
PHYSICIANS	206	1,339	2888	511	<b>4,944</b>
DENTIST	42	95	762	220	<b>1,119</b>
NURSES	486	3,647	4281	479	<b>8,893</b>
PHARMACIST	42	156	92	33	<b>323</b>
ALLIED HEALTH/ TECHNICIANS	277	1,519	907	333	<b>3,036</b>
<b>TOTAL</b>	<b>1,053</b>	<b>6,756</b>	<b>8,930</b>	<b>1,576</b>	<b>18,315</b>

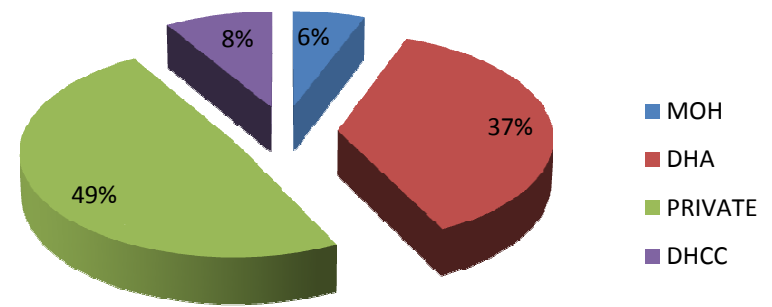
Sources: DHCC 2009 Data  
Dubai Health Authority 2009 Estimated Statistics  
MOH 2009 Annual Statistics

# Health Manpower – 2009

## Healthcare Professional Distribution by Specialty 2009

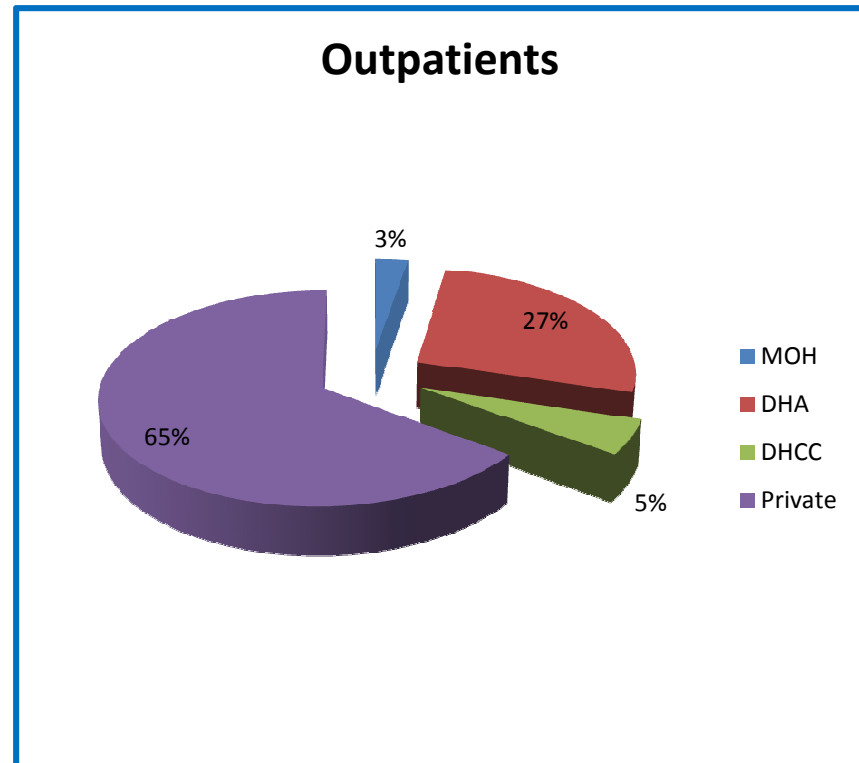
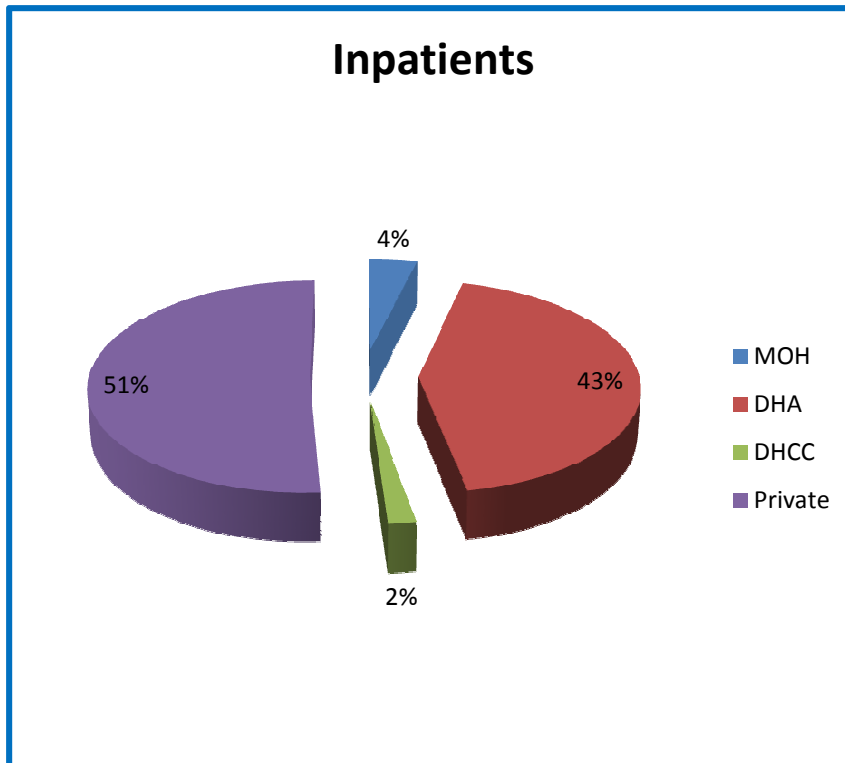


## Healthcare Professional Distribution by Entity 2009



## Basic Healthcare Services Utilization – 2009

Healthcare Indicators	MOH	DHA	DHCC	Private
Inpatients	6,915	77,906	3219	91,805
Outpatients	110,752	1,147,724	227,512	2,759,785



2009 Statistics

Sources: DHCC, DHA & MOH Data

8/9/2010

# *International Benchmark*

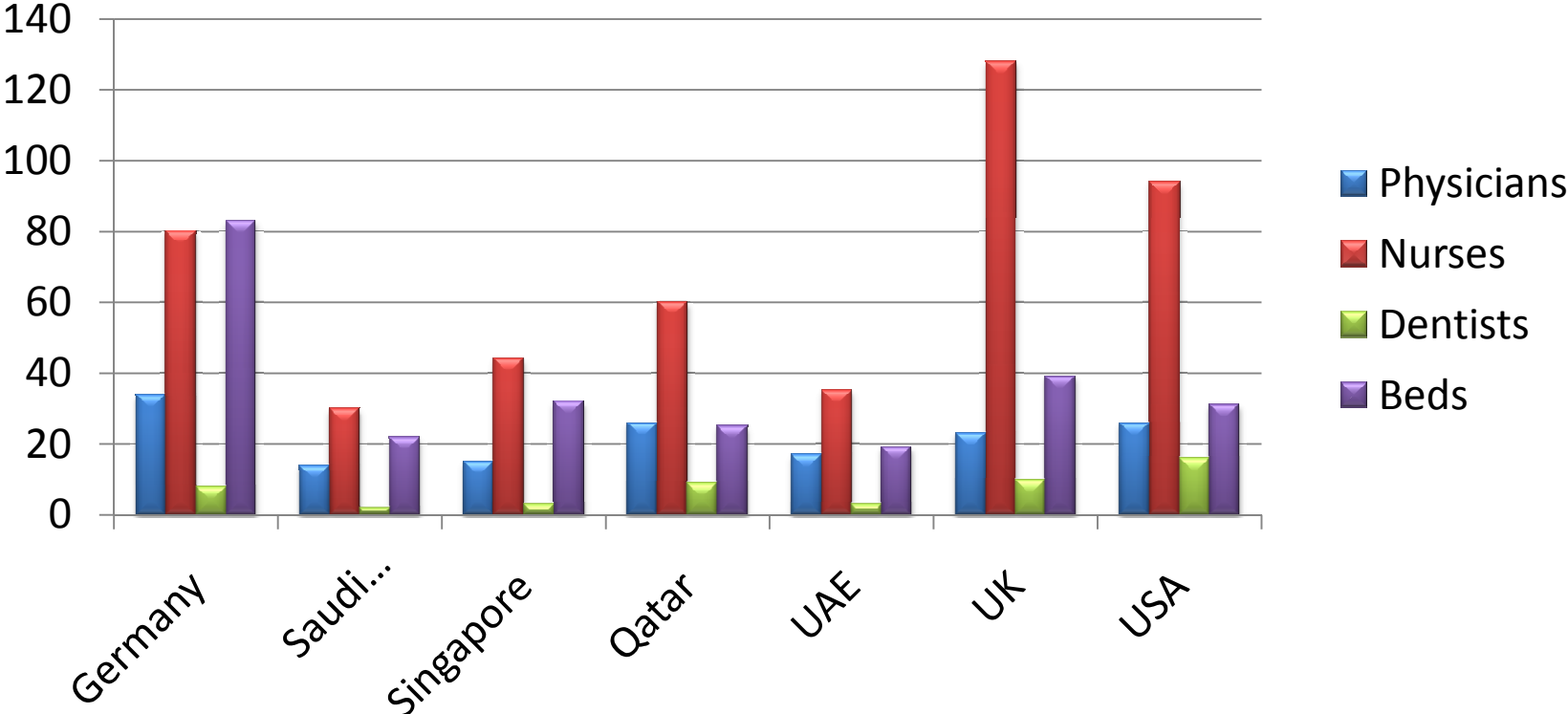
Ratio of Healthcare Professional per 10000 Population

Country	Physicians	Nurses	Dentists	Beds
Germany	34	80	8	83
Saudi Arabia	14	30	2	22
Singapore	15	44	3	32
Qatar	26	60	9	25
UAE	17	35	3	19
UK	23	128	10	39
USA	26	94	16	31

2009 WHO Manual- 2007 Data

# Ratio of Healthcare Professional per 10000 Population

Healthcare Professional Ratio per 1000 Population-2007



2009 WHO Manual- 2007 Data

# ***Major Planned & Upcoming Healthcare Projects in DHCC***

## *Expected Hospitals– Dubai Healthcare City*

DUBAI HEALTHCARE CITY Phase 1	Beds	Year
Al Jord Orthopedic Hospital	40	Under construction
Al Qubaisi Urology Hospital	25	Under construction
Minimal Invasive Surgery Hospital	50	Construction to be initiated
University Teaching Hospital	400	TBD

Dubai Healthcare City Phase 2	Beds	Year
Women Hospital	100	TBD
Rehabilitation Hospital	200	TBD
Rehabilitation Hospital	100	TBD
Psychiatry Hospital	80	TBD

Sources: 2009 DHCC Data

8/9/2010